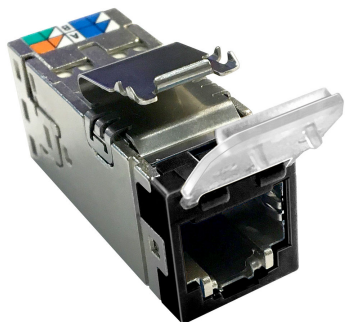


# 4-2153365-2 | ECO AMP-TWIST SLX, 6AS W/DC, BLK-BULK



AMP-TWIST SLX Series Modular Jack, category 6A, shielded , 4 Pair, with dust cover, black (24 ea/pkg)

- Part of CommScope's initiative of removing single-use plastics which also includes copper panels, jacks, cords and faceplates

## Product Classification

### Regional Availability

Asia | Australia/New Zealand | EMEA | Latin America

### Portfolio

NETCONNECT®

### Product Type

Modular jack

### Product Series

SLX Series

## General Specifications

### ANSI/TIA Category

6A

### Cable Type

Shielded

### Color

Black

### Conductor Type

Solid | Stranded

### Integrated Dust Cover Type

Hinged

### Mounting

SL Series faceplates and panels

### Mounting Note

Color matches with SL-style Black Faceplates and Surface Mount Boxes

### Outlet Type

Standard

### Termination Punchdowns, minimum

5 times

### Termination Tool

SL Termination tool

### Termination Type

IDC

### Transmission Standards

ANSI/TIA-568-C.2 | ISO/IEC 11801 Class EA

### Wiring

T568A | T568B

## Dimensions

### Panel Cutout, recommended

14.78 x 20.07 mm (0.58 x 0.79 in)

### Panel Thickness, recommended

1.6 mm | 0.063 in

# 4-2153365-2 | ECO AMP-TWIST SLX, 6AS W/DC, BLK-BULK

---

<b>Height</b>	16.13 mm   0.635 in
<b>Width</b>	14.44 mm   0.569 in
<b>Depth</b>	36.8 mm   1.449 in
<b>Compatible Cable Diameter, maximum</b>	8.5 mm   0.335 in
<b>Compatible Insulated Conductor Diameter, maximum</b>	1.6 mm   0.063 in
<b>Contact Plating Thickness</b>	1.27 µm
<b>Compatible Conductor Gauge, solid</b>	26–22 AWG
<b>Compatible Conductor Gauge, stranded</b>	26–24 AWG

## Electrical Specifications

<b>Remote Powering</b>	Fully supports the safe delivery of power over LAN cabling described by IEEE 802.3bt (Type 4) and complies with the unmating under electrical load requirements prescribed by IEC 60512-99-002
------------------------	--

## Material Specifications

<b>Contact Base Material</b>	Beryllium copper
<b>Contact Plating Material</b>	Gold
<b>Material Type</b>	Polycarbonate   Zamak

## Mechanical Specifications

<b>Plug Insertion Life, minimum</b>	750 times
-------------------------------------	-----------

## Environmental Specifications

<b>Operating Temperature</b>	-10 °C to +60 °C (+14 °F to +140 °F)
<b>Flammability Rating</b>	UL 94 V-0

## Packaging and Weights

<b>Packaging Material</b>	Eco-friendly, single-use plastics-free
<b>Packaging quantity</b>	24
<b>Packaging Type</b>	Box   Carton

## Regulatory Compliance/Certifications

<b>Agency</b>	<b>Classification</b>
CHINA-ROHS	Below maximum concentration value
REACH-SVHC	Compliant as per SVHC revision on <a href="http://www.commscope.com/ProductCompliance">www.commscope.com/ProductCompliance</a>

# 4-2153365-2 | ECO AMP-TWIST SLX, 6AS W/DC, BLK-BULK

---

ROHS

Compliant

